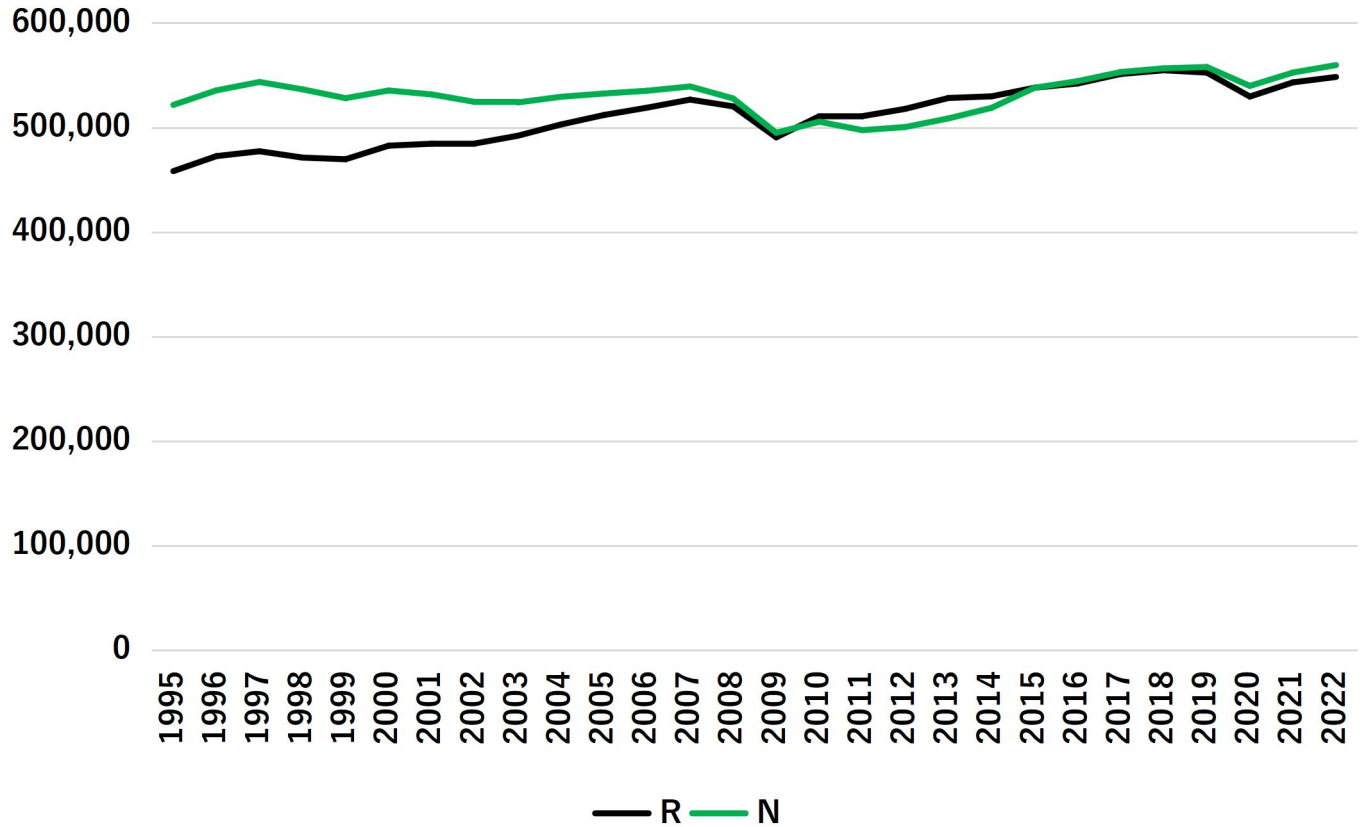


	R	N	P
1995	458,270	521,614	1.138
1996	472,632	535,562	1.133
1997	477,270	543,545	1.139
1998	471,207	536,497	1.139
1999	469,633	528,070	1.124
2000	482,617	535,418	1.109
2001	484,480	531,654	1.097
2002	484,684	524,479	1.082
2003	492,124	523,969	1.065
2004	502,882	529,401	1.053
2005	511,954	532,516	1.040
2006	518,980	535,170	1.031
2007	526,681	539,282	1.024
2008	520,233	527,824	1.015
2009	490,615	494,938	1.009
2010	510,720	505,531	0.990
2011	510,842	497,449	0.974
2012	517,864	500,475	0.966
2013	528,248	508,701	0.963
2014	529,813	518,811	0.979
2015	538,081	538,032	1.000
2016	542,137	544,365	1.004
2017	551,220	553,073	1.003
2018	554,767	556,630	1.003
2019	552,535	557,911	1.010
2020	529,621	539,808	1.019
2021	543,176	552,571	1.017
2022	548,362	559,710	1.021

$R = \frac{N}{P}$  から  $P = \frac{N}{R}$  で  $P$  を計算

# GDP (実質と名目)



	R	N	P	G. R	G. N	G. P	G. N-G. P
1995	458, 270	521, 614	1. 138				
1996	472, 632	535, 562	1. 133	3. 134	2. 674	-0. 446	3. 120
1997	477, 270	543, 545	1. 139	0. 981	1. 491	0. 504	0. 986
1998	471, 207	536, 497	1. 139	-1. 270	-1. 297	-0. 027	-1. 270
1999	469, 633	528, 070	1. 124	-0. 334	-1. 571	-1. 241	-0. 330
2000	482, 617	535, 418	1. 109	2. 765	1. 391	-1. 336	2. 728
2001	484, 480	531, 654	1. 097	0. 386	-0. 703	-1. 085	0. 382
2002	484, 684	524, 479	1. 082	0. 042	-1. 350	-1. 391	0. 041
2003	492, 124	523, 969	1. 065	1. 535	-0. 097	-1. 608	1. 510
2004	502, 882	529, 401	1. 053	2. 186	1. 037	-1. 125	2. 162
2005	511, 954	532, 516	1. 040	1. 804	0. 588	-1. 194	1. 782
2006	518, 980	535, 170	1. 031	1. 372	0. 499	-0. 862	1. 361
2007	526, 681	539, 282	1. 024	1. 484	0. 768	-0. 705	1. 474
2008	520, 233	527, 824	1. 015	-1. 224	-2. 125	-0. 912	-1. 213
2009	490, 615	494, 938	1. 009	-5. 693	-6. 230	-0. 570	-5. 661
2010	510, 720	505, 531	0. 990	4. 098	2. 140	-1. 881	4. 021
2011	510, 842	497, 449	0. 974	0. 024	-1. 599	-1. 622	0. 023
2012	517, 864	500, 475	0. 966	1. 375	0. 608	-0. 756	1. 364
2013	528, 248	508, 701	0. 963	2. 005	1. 644	-0. 354	1. 998
2014	529, 813	518, 811	0. 979	0. 296	1. 987	1. 686	0. 301
2015	538, 081	538, 032	1. 000	1. 561	3. 705	2. 111	1. 594
2016	542, 137	544, 365	1. 004	0. 754	1. 177	0. 420	0. 757
2017	551, 220	553, 073	1. 003	1. 675	1. 600	-0. 074	1. 674
2018	554, 767	556, 630	1. 003	0. 643	0. 643	0. 000	0. 643
2019	552, 535	557, 911	1. 010	-0. 402	0. 230	0. 635	-0. 405
2020	529, 621	539, 808	1. 019	-4. 147	-3. 245	0. 941	-4. 186
2021	543, 176	552, 571	1. 017	2. 559	2. 364	-0. 190	2. 554
2022	548, 362	559, 710	1. 021	0. 955	1. 292	0. 334	0. 958

實質GDP成長率，名目GDP成長率，物価上昇率

